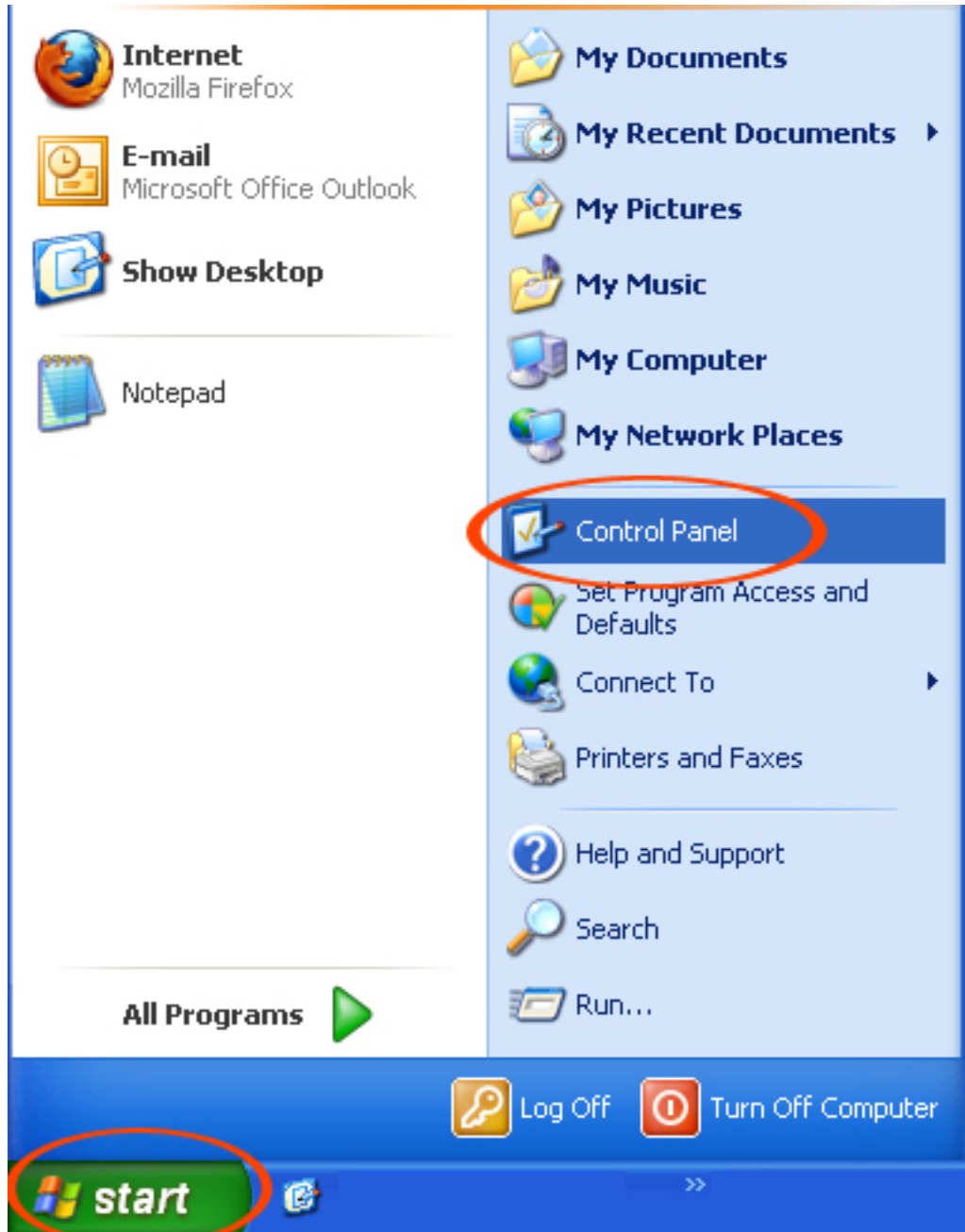


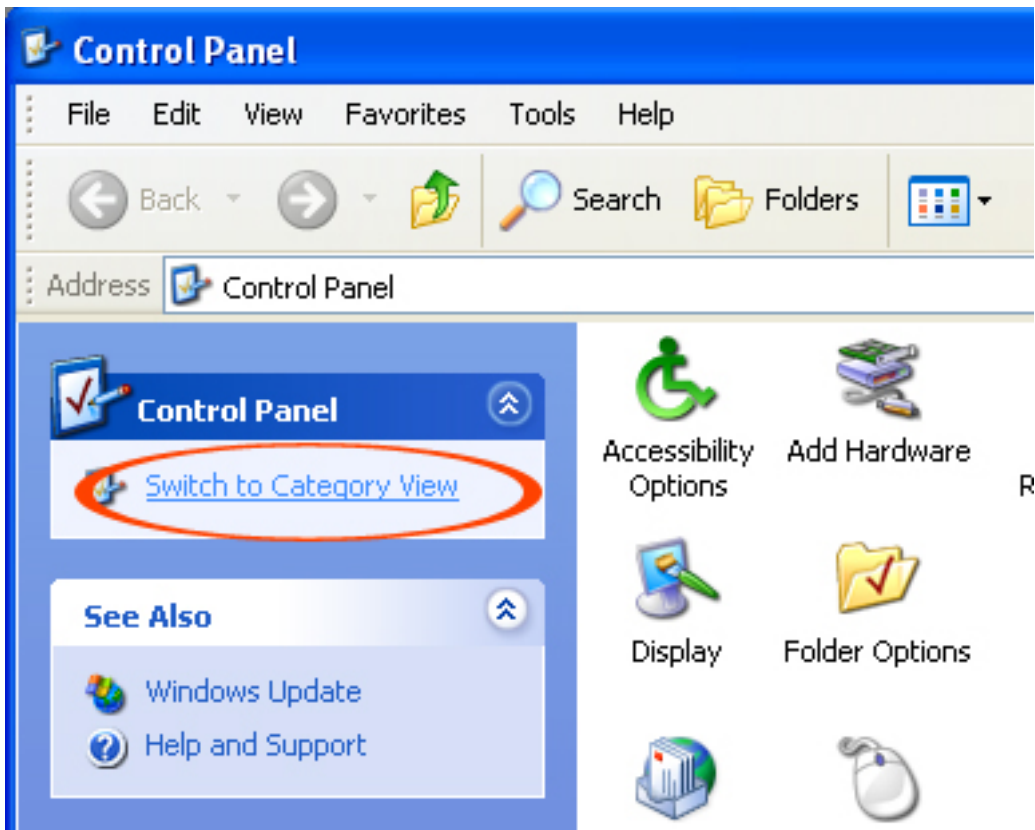
Set up the L2TP VPN connection on Windows XP

This step-by-step tutorial shows how to setup a L2TP connection on Windows XP and start using 1.1.1.1 servers.

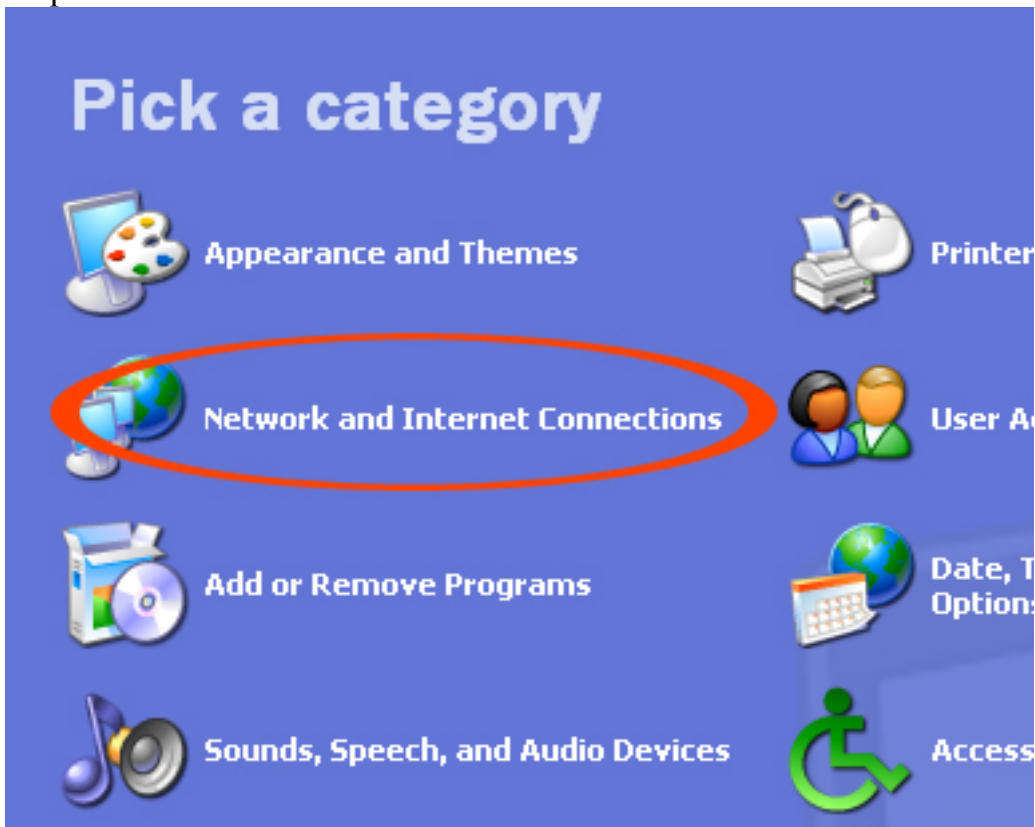
Step 1. Open Start and select Control Panel.

Step 2. Select Switch to Category View if control panel is not set to Category View.

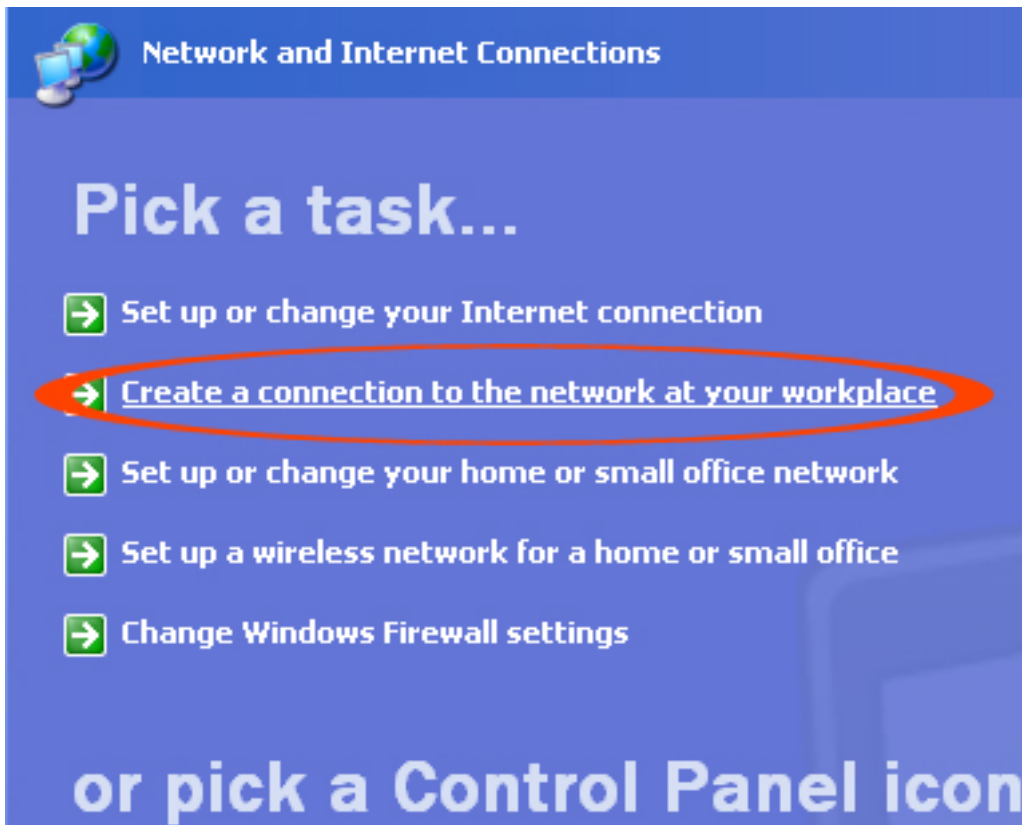




Step 3. Select Network and Internet Connections.



Step 4. Select Create a connection to the network at your workplace.



Step 5. Select Connect to a Virtual Private Network (VPN) and click Next.



Step 6. Fill in the field Company Name with Corporate VPN and click Next.

New Connection Wizard

Connection Name
Specify a name for this connection to your workplace.

Type a name for this connection in the following box.

Company Name

ibVPN

For example, you could type the name of your workplace or the name of a company you will connect to.

Step 7. Fill in the field Host Name with the server name 1.1.1.1 and click Next.

New Connection Wizard

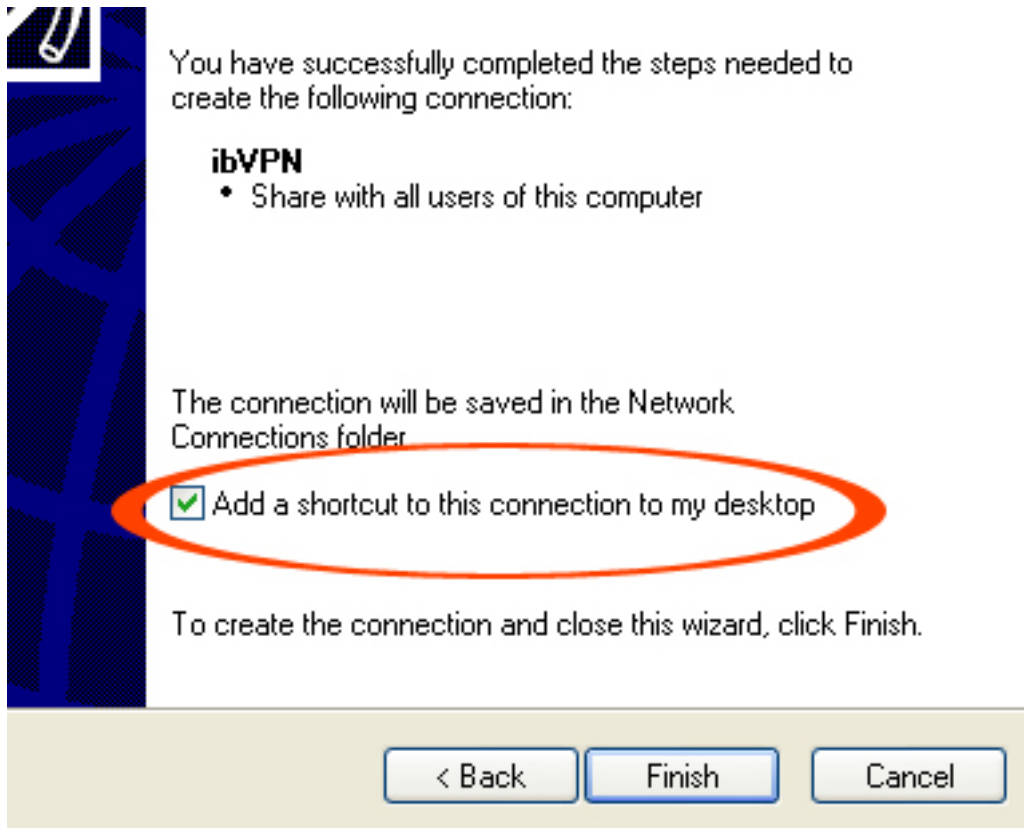
VPN Server Selection
What is the name or address of the VPN server?

Type the host name or Internet Protocol (IP) address of the computer to connecting.

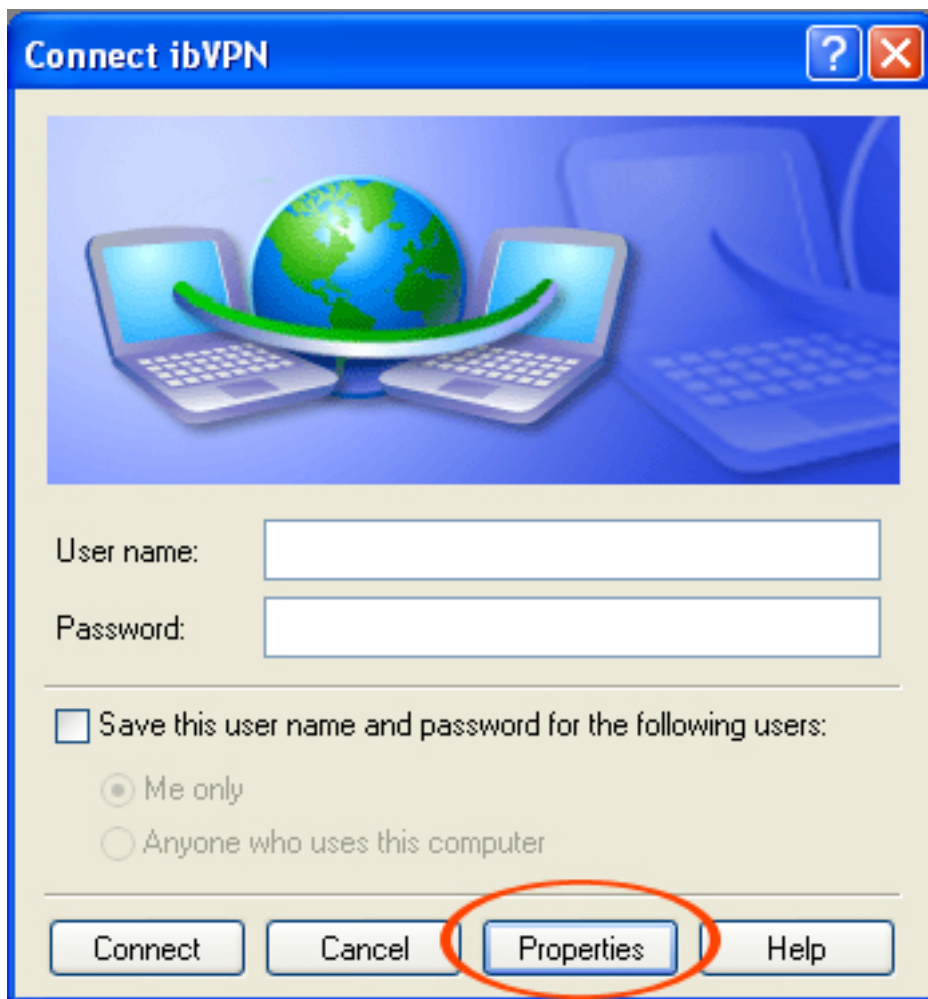
Host name or IP address (for example, microsoft.com or 157.54.0.1):

us1.ibvpn.com

Step 8. Check the Add a shortcut to this connection on the desktop option and click Finish. Step 9. Open the new connection by double clicking on the Corporate VPN icon available on the desktop.

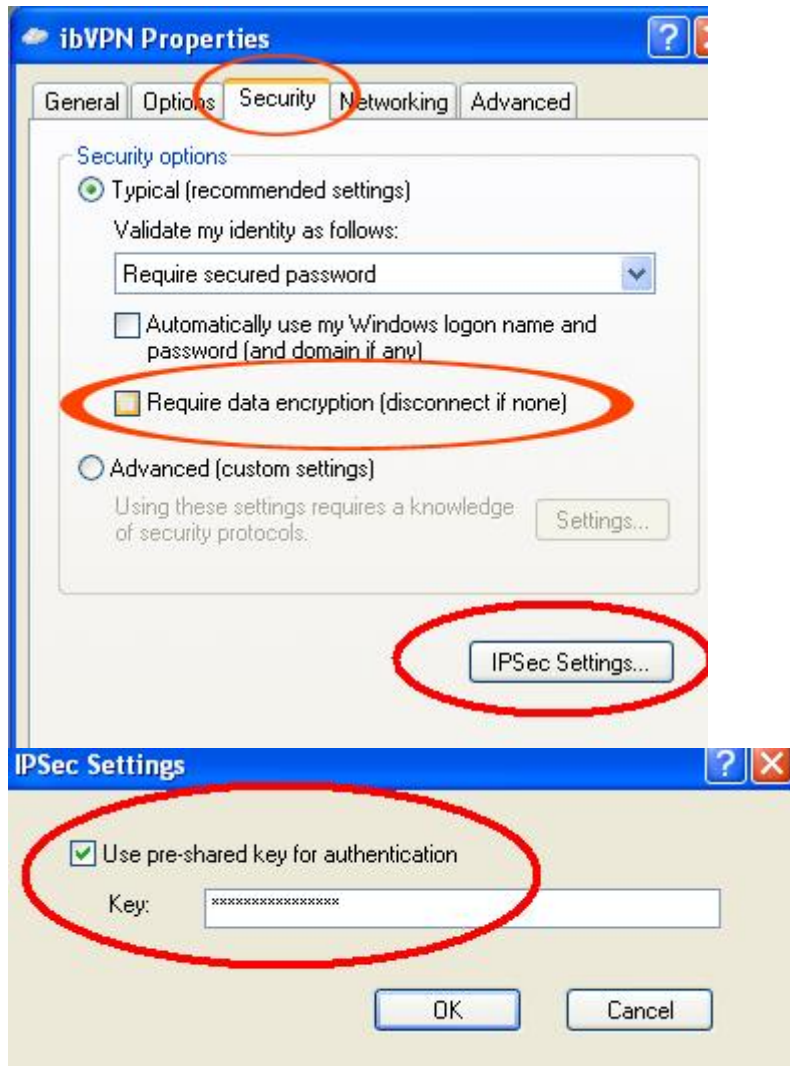


Step 10. Select Properties and open the Security tab.



Step 11. **Update! Please read.** Please check Advanced instead of Require data encryption (disconnect if none). Now select Maximum strenght encryption encryption (disconnect if server declines). Click on IPsec Settings button.

Step 12. Check Use pre-shared key for authentication and input *vpn* as the key and click OK.



Step 13. In the Networking tab select as Type of VPN: L2TP IPsec VPN then click OK.



Step 14. Fill in your Username mtnvpn and Password mtnvpn



Step 15. Click Connect

To connect/disconnect the VPN connection right click on the connection icon (viewable at Network Connections) and select connect/disconnect.